



May 5th 2022

Workstream 3: Implementing the Global Vector Control Response

Welcome and introduction



Chadwick Sikaala



Mark Hoppé

Welcome and introduction

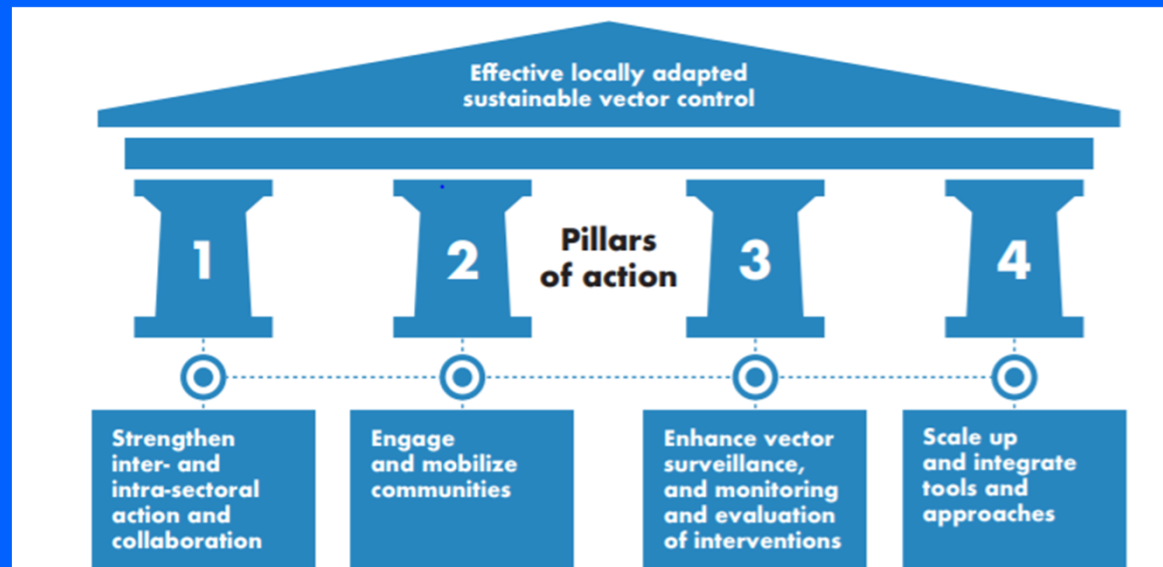
- Welcome, and many thanks to everyone for taking the time to attend the Implementing the Global Vector Control Response Stream session
- Collaboration is a key theme, please participate in this meeting, and the Work Stream activities
- Please continue to contribute and share your knowledge, experience and ideas with the Work Stream and your VC colleagues

Welcome and introduction

- Please note that translation is available in English and French
- Veuillez noter que la traduction est disponible en anglais et en français
- If you have any questions please write them in the chat function
 - If your question is for a specific speaker, please write @[name of speaker] to identify them
- Presentations and further information available in the Attendee's Hub

The Global Vector Control Response 2017–2030

- Reducing the burden and threat of vector-borne diseases that affect humans
- Effective locally adapted sustainable vector control



Agenda

Time (CET)	Topic	Presenter
15:00-15:10	Welcome and introduction	Co-Leads
Capacity and Collaboration		
15:10 – 15:30	New WHO procedures and discriminating concentrations for monitoring resistance in adult mosquito vectors	Lucia Fernandez Montoya
15:30 – 15:50	An introduction to ORENE	Leo Braack
15:50 – 16:10	Updates from the Global Vector Hub	Frederik Seelig
16:10 – 16:20	Task Team updates	Co-Leads
<i>Anopheles stephensi</i>		
16:20 – 16:40	Feedback from the VSWG's An. stephensi meetings, and proposed response	Justin McBeath
16:40 – 17:00	MESA – <i>An. stephensi</i> 'deep dive'	Nana Aba Williams / Helen Nwanosike
17:00 – 17:10	Task Team way forward	Co-Leads
IVM		
17:10 – 17:20	Task Team way forward	Co-Leads
17:20 – 17:30	IRM MOOC update	Mark Hoppé
Wrap-up		
17:30 - 17:45	Work Stream announcements, General discussion and Wrap-up	Co-Leads

Agenda

- Capacity and Collaboration
 - New WHO procedures and discriminating concentrations for monitoring resistance in adult mosquito vectors
 - Lucia Fernandez Montoya
 - An introduction to ORENE
 - Leo Braack
 - Updates from the Global Vector Hub
 - Frederik Seelig

Agenda

- *Anopheles stephensi*
 - Feedback from the VCWG's *An. stephensi* meetings, and proposed response
 - Justin McBeath
 - MESA – *An. stephensi* 'deep dive'
 - Nana Aba Williams / Helen Nwanosike

Agenda

- Integrated Vector Management
 - IRM MOOC update
 - Mark Hoppé

Agenda

- Wrap-up



Thank you, find out more
visit endmalaria.org
[@EndMalaria](https://twitter.com/EndMalaria)