



**Partnership**  
To End Malaria

20 May, 2022

---

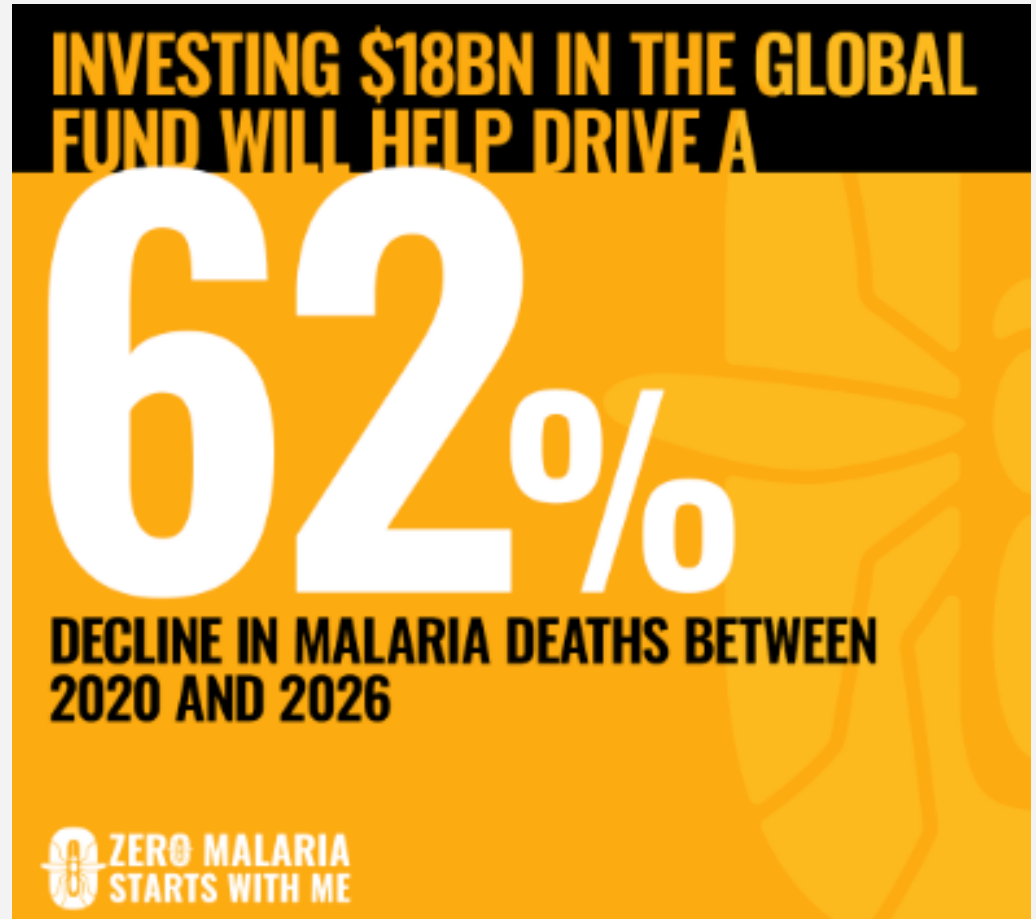
# Global Malaria Dashboard

Near real-time data for decision making, transparency and accountability

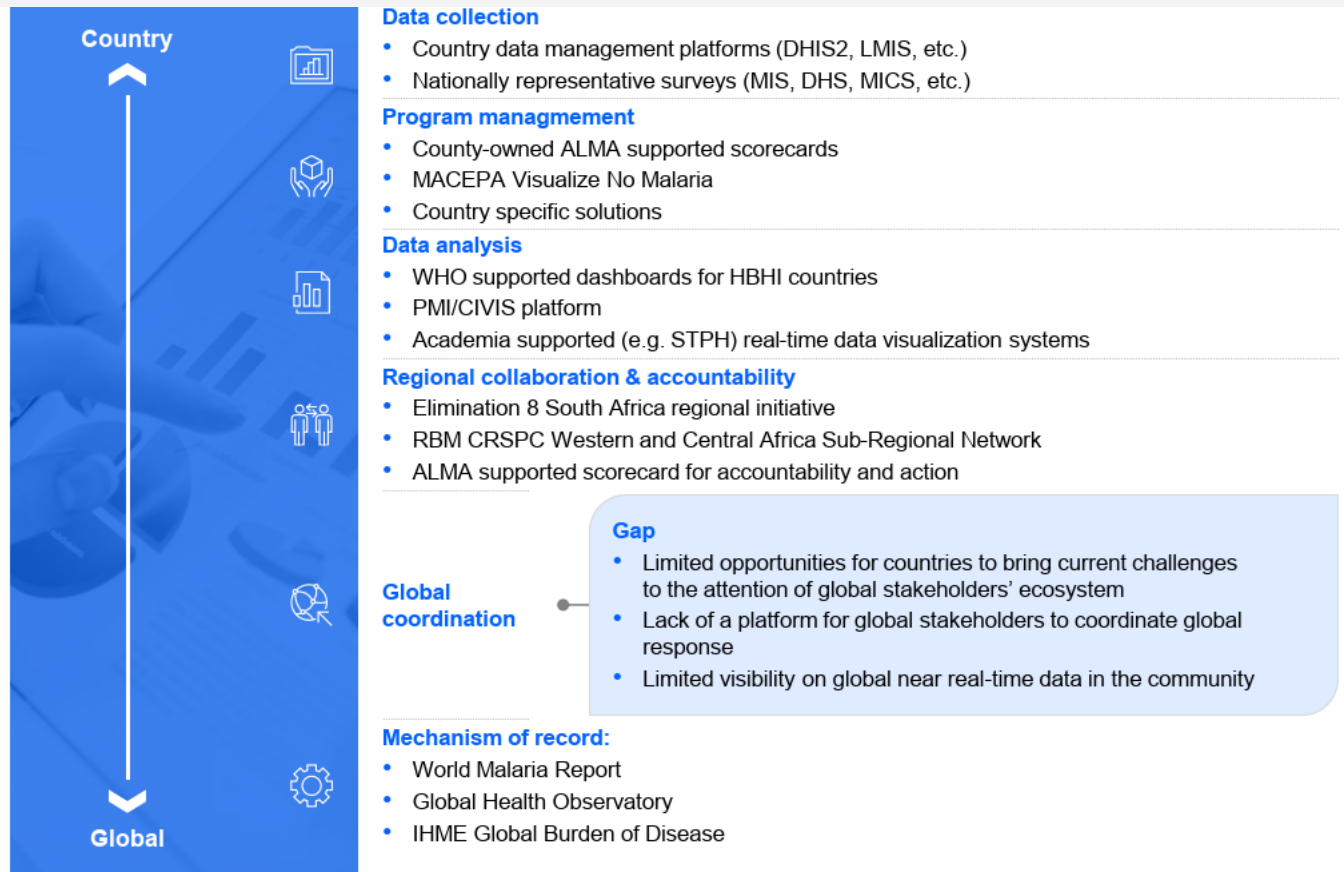
33rd SMERG Annual Meeting

# Presentation Outline

- Background
- Guiding Principles
- Critical Actions
- Current Dashboards
- Upcoming Dashboards
- Early Successes
- Areas for Improvement
- Conclusion
- Discussion and questions



# Background



# Guiding Principles



## Country-centricity

- Countries escalate challenges



## Data ownership

- Respect country data ownership



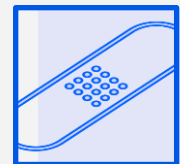
## Future action orientation

- Monitoring with a focus on empowering future country capacities



## Global Action focus

- Data and action driven response from global stakeholders on critical areas on quarterly basis



## Continuous data improvement

- Best available data with minimum quality flaws



## Process evolution

- Continuously improve dashboards and associated processes

# Critical Actions



## Secure funding for specific gaps



- ◆ Provide visibility on country country funding gaps



## Support Near Elimination & Elimination Countries

- ◆ Sustain resource mobilisation by identifying gaps



## Support Country level Outbreak Response

- ◆ Provide visibility on country funding gaps



## Support Urgent Technical & Implementation Needs



- ◆ Provide countries with a platform to raise key technical needs



## Ensure Campaigns are on track



- ◆ Monitor timing of campaigns and support prompt interventions to mitigate risk & minimise epidemics



## Optimise Utilisation of New Drugs/Tools

- ◆ Monitor adoption of new norms, standards, products or interventions



## Prevent & Manage Stock Outs Actively



- ◆ Monitor & predict stock at country level to ensure sufficient levels



## Foster Data Quality

- ◆ Improve quality of reported data over time through increased focus on the metrics reported on the Dashboard



## Increase Funding Absorption



- ◆ Provide visibility on country-level absorption for action in case of underspending

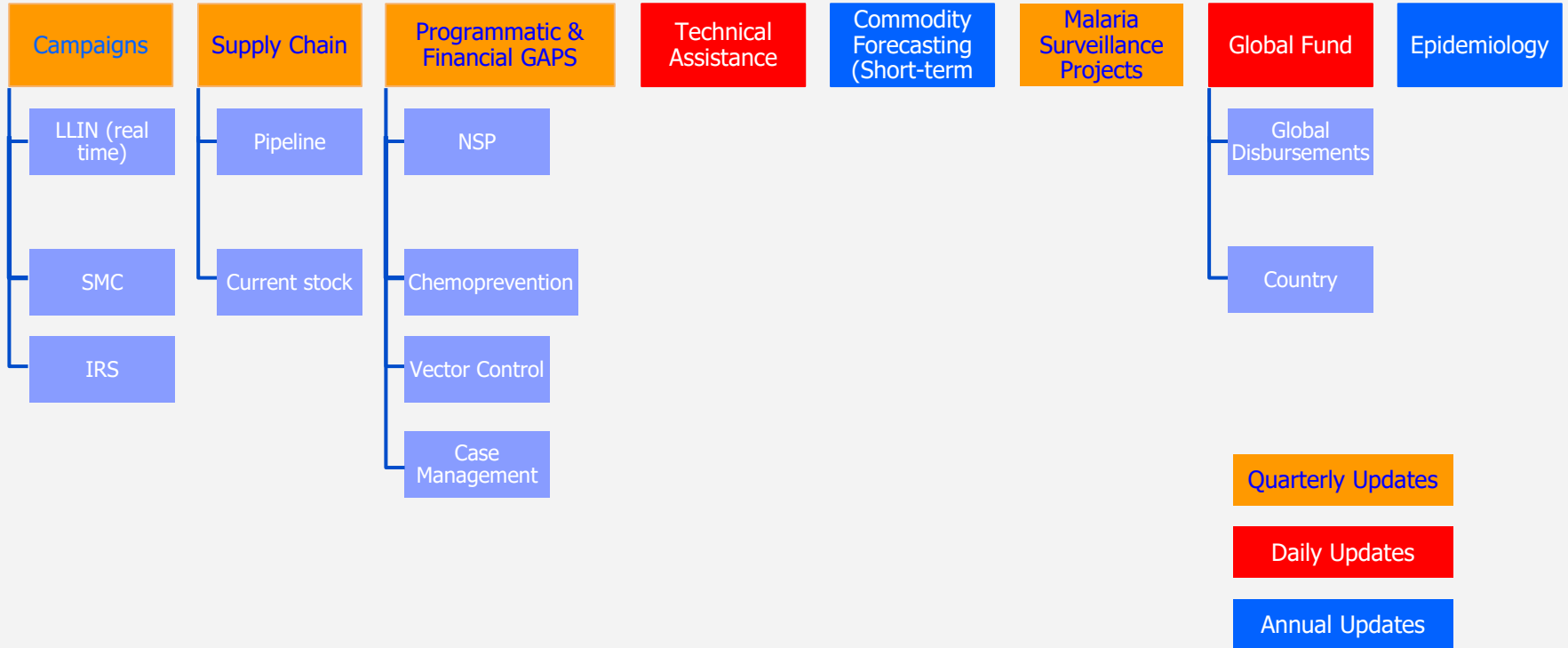


## Coordinate Key Interactions & Milestones from Country to Global Level

- ◆ Enable countries to align stakeholders' processes to minimise load and simplify reporting

# Current Dashboards

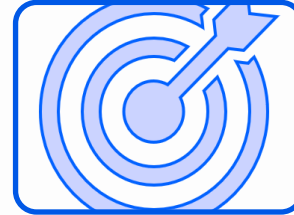
## Global Malaria Dashboard



# Upcoming Dashboards



The Alliance for  
**Malaria Prevention**



**Weather  
forecasting  
(IRI)**

**Mass Campaign  
tracker**

**Country Targets  
and  
achievements**

**Country  
dedicated  
Dashboards**

# Early Successes

- COVID-19 put the Global Malaria Response at Risk
  - Potential Cancellations of Campaigns
  - Supply Chain Disruptions
- Better data & information coordination helped keep the response on track
  - LLINs, IRS, SMC were rolled out
  - Stockouts of ACTs, RDTs were averted due to quick responses & coordination by stakeholders.
- The RBM dashboard continues to be used as a platform where donors and stakeholders converge quarterly to solve bottlenecks (financial, programmatic).



# Areas for Improvement

- Minimum Viable Product needing improvement
  - Working on improving User experience
  - Continuous improvement on Data Quality
  - Expand the scope and Users of the Dashboard

# Conclusion

- Access to the dashboard

<https://endmalaria.org/dashboard>

- You are welcome to contribute to the Dashboard work by;
  - Comments & Suggestions
- Active participation of partners and countries by;
  - Adding data repositories and links to dashboards
- All Data published on the Dashboard are Publicly available, access is through registration on the platform

# Supporting Partners

Countries Conducting IRS Campaigns in 2021

36

4 Currently At Risk or Off Track

Countries Conducting SMC Campaigns in 2021

13

2 Currently At Risk or Off Track

Countries Conducting LLIN Campaigns in 2021

23

5 Currently At Risk or Off Track

2021 Global View: SMC, LLIN, IRS Campaigns At Risk or Off Track

Source: CRSPC Tracker

